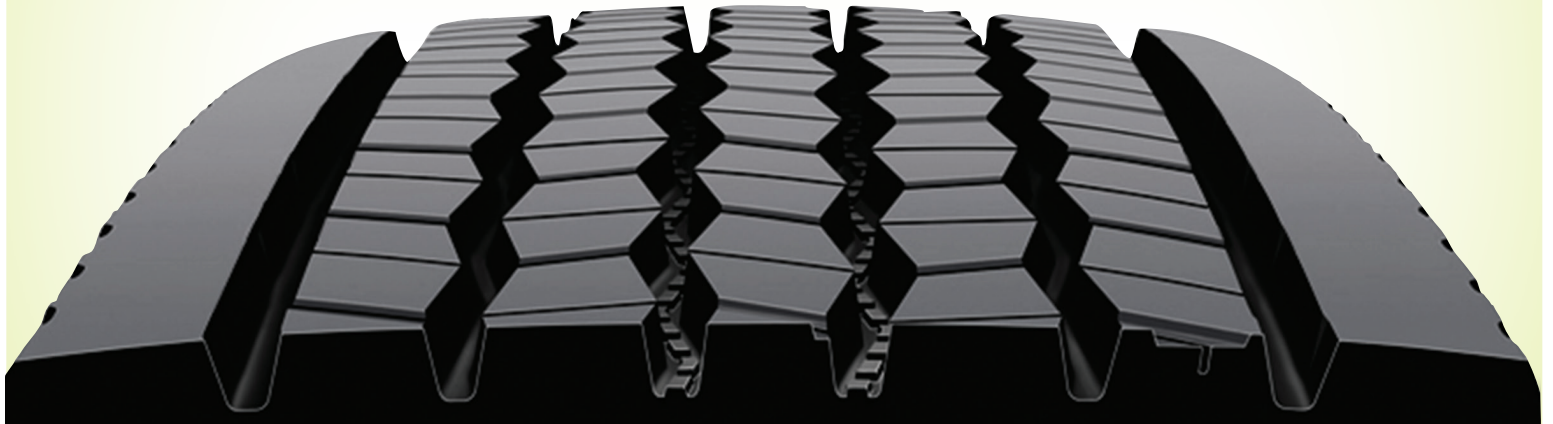


Greatec™ M835A™

Fuel-Efficient Wide Base Drive Radial
Weight Saving, Long Wearing



Fuel Efficient ■ Long Life ■ Outstanding Retreadability*



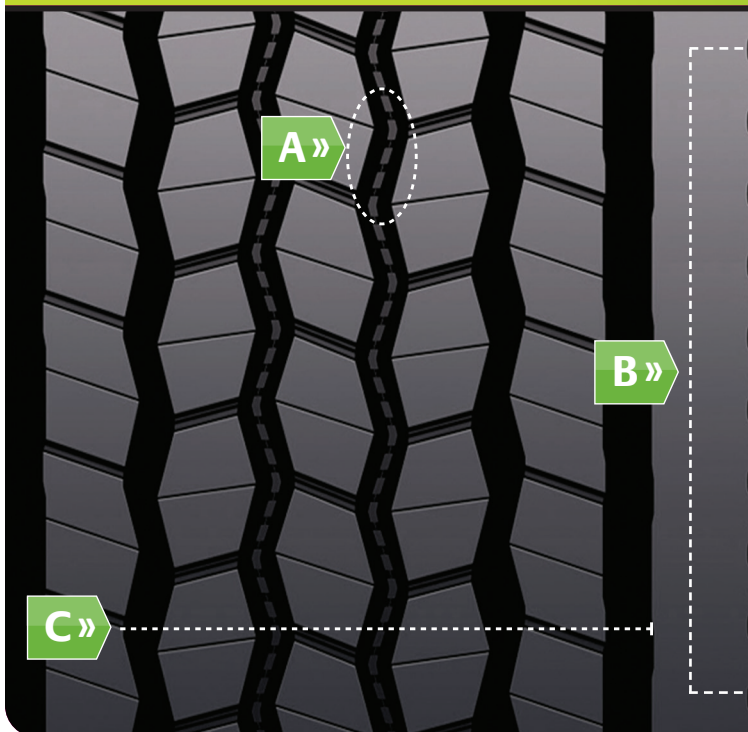
LOWER COSTS. GREENER RETURNS*

The Greatec M835A Ecopia™ tire is designed for tandem-axle drive applications in long-haul service. Thanks to a significant improvement in irregular wear resistance, the Greatec M835A tire delivers up to 20% longer removal miles** than the previous generation, Greatec M835 without compromising low rolling resistance and outstanding retreadability benefits.

* Retreadability is considered based on the non-retreadable ratio in the market within the specific size 445/50R22.5

** The improvement in tread wear is the projected mileage based on the Bridgestone internal proprietary field test result around 34% worn stage

Greatec M835A Ecopia Innovations



A Stone Rejector Platforms
.....
Combat capture and retention of casing-damaging stones.

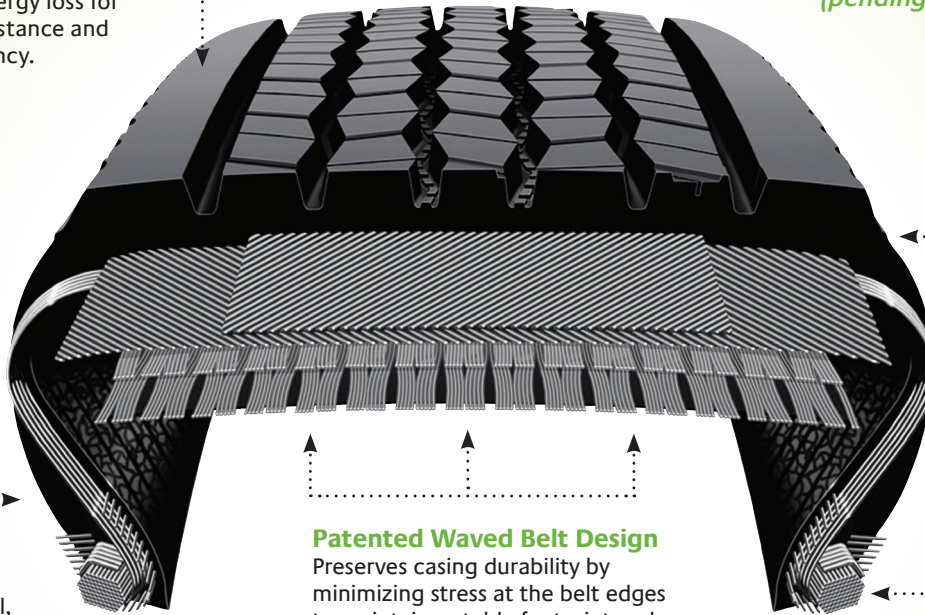
B Continuous Shoulder Design
.....
Distributes weight and torque uniformly to fight irregular wear for long tread life and overall even wear.

C Optimized Tread Design
.....
Utilizes a six-groove High Rigidity Tread Pattern for long, even wear and low rolling resistance.

NanoPro-Tech™ Compound

Patented NanoPro-Tech polymer technology limits energy loss for improved rolling resistance and optimum fuel efficiency.

Greatec M835A Ecopia Tire meets the requirement of EPA Smartway and California Air Resources Board (CARB) compliant (pending final approval)



Optimized Shoulder Design

Enhances the irregular wear resistance by optimizing the footprint for even wear balance

Fuel Saver Sidewall™

Limits energy loss using a proprietary sidewall compound to help conserve fuel, both when new and retreaded.

Patented Waved Belt Design

Preserves casing durability by minimizing stress at the belt edges to maintain a stable footprint and reduce casing growth.

Patented Turn-In Ply Design

Promotes casing durability by wrapping the body ply around the bead bundle to reduce ply-end stress.

Greatec M835A Tire Size	Load Range	Article #	Weight (Lbs)	Meas. Rim (in)	Overall Diam. (in)	Overall Width (in)	Overall Width (Loaded)	Static Loaded Radius	Revs Per Mile	Tread Depth (32")	Max. Tire Load — Single		Max. Tire Load — Dual		Max. Speed (MPH)
											Lbs/PSI / Kg/kPa	Lbs/PSI / Kg/kPa			
445/50R22.5 metric	L	241609	173 / 78	14.00	39.9 / 1013	17.7 / 450	19.4 / 493	18.6 / 472	524 / 326	23 / 18.3	10200@120 / 4625@830	— / —	75 / 120		

Warranty and additional technical information is available at EcopiaTruckTires.com, or from your dealer or truckstop.

Maximize your Ecopia advantage with FuelTech® retreads – Bridgestone Ecopia truck tires and Bandag FuelTech retreads are designed to work together. Specially engineered compounds, paired with matching tread patterns, promote an eco-friendly solution that continues optimal low rolling resistance from new tire to retread. And since Bridgestone casings are the most retreadable casings in the industry¹, you can confidently extend the life of your new tires to realize a lower total cost of ownership.*

For more information about Bridgestone Ecopia or Bandag FuelTech products, please visit EcopiaTruckTires.com.



*Based on rolling resistance and field mileage tests, Bridgestone Ecopia and Bandag FuelTech are our most fuel efficient and lowest total cost of ownership tire and retread solution. Combining proprietary low rolling resistance technology with the industry's most retreadable casing, Ecopia and FuelTech can help reduce fuel use and extend tire life for lower costs and greener returns, when compared to other Bridgestone tires.
¹BASys® data from over two million Bridgestone, Goodyear and Michelin brand casings recorded between June 2009 and November 2010 prove that Bridgestone had the lowest percentage of tires that could not be retreaded due to conditions relating to casing construction.