

BRIDGESTONE

VHS-VHS2

V-STEEL
HIGH SPEED SERVICE

E-2, MC



The V-Steel HIGH SPEED SERVICE radial tire provides excellent traction and flotation with heat resistant compounds for mobile crane operations (US DOT approved).

Available in 51 Inch sizes for coal haulers in high TKPH operations.



COAL HAULERS | MOBILE CRANE SERVICE (HIGH SPEED) | STRADDLE CARRIERS | CONTAINER HANDLERS

SPECIALIZED FEATURES

1 NEW TREAD RUBBER

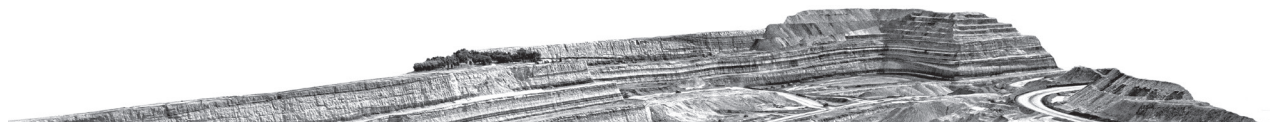
Delivers longest lasting heavy-duty performance. Combining durability and long wear life with excellent on-road performance

2 NON-DIRECTIONAL TREAD PATTERN (CLOSED SHOULDER & VARIABLE PITCHES)

Provides excellent flotation, traction and steering response, reducing noise level.

3 SMOOTH WEARING - REDUCES IRREGULAR WEAR

Provides low vibration and noise and extends tire life



BRIDGESTONE COMMERCIAL

See your Bridgestone representative for more information.

BS125 - V24 ©Bridgestone Americas Tire Operations LLC. All Rights Reserved.

BRIDGESTONE

Firestone

BRIDGESTONE

VHS-VHS2

V-STEEL
HIGH SPEED SERVICE

E-2, MC

CATEGORY	SIZE	LI/SS PLY/STAR RATING	COMPOUND/ CONSTRUCTION	TRA	ARTICLE #	AVG. WT. [□] [LBS]	OTD [□] [32"]	OVERALL DIAMETER [□] [IN]	OVERALL WIDTH [□] [IN]	SPEED RATING MPH
SMALL TUBE TYPE	385/95R24	170/E	-	Mobile Crane Service	421790	315	29	53.4	15.1	43
SMALL TUBELESS	385/95R25	170 /F	-	Mobile Crane Service	430824	320	29	53.4	15.1	50
	445/95R25	174/F	-	Mobile Crane Service	430841	440	32	58.4	17.1	50
	445/95R25 ‡	174/F	-	Mobile Crane Service	3619	440	32	58.4	17.3	50
	525/80R25	176/F	-	Mobile Crane Service	5300	491	39	58.3	21.1	50
GIANT TUBELESS	36.00R51	2*	E3A	E-2	430280	4,560	55	122.4	40.0	-

All lineup U.S DOT approved for highway use except 36.00R51 - Art # 430280
‡ =VHS2

□ Actual specifications may vary depending on the tire produced. Off-road tire limited warranty information is available from your Bridgestone representative or dealer.

BRIDGESTONE COMMERCIAL

See your Bridgestone representative for more information.

BS125 - V24 ©Bridgestone Americas Tire Operations LLC. All Rights Reserved.
 "Best-In-Class Service" is based on the largest number of dealers in the commercial tire dealer network in U.S. found on
 www.commercial.bridgestone.com. As compared to the 2022 U.S. Replacement and Retreaded Medium/Heavy Truck Tire Brands with
 similar market share as listed in the January 2023 Modern Tire Dealer (page 34).

BRIDGESTONE**Firestone**